

Adjustable Hand Levers

Zinc Die Casting, Insert Stainless Steel, with Internal Thread / Reamed Hole, with External Thread

SPECIFICATION

Handle

Zinc die casting

- Powder coated
 - Black, RAL 9005, textured finish **SW**
 - Black, RAL 9005, silk finish **SZ**
 - Orange, RAL 2004, textured finish **OS**
 - Red, RAL 3000, textured finish **RS**
 - Silver, RAL 9006, textured finish **SR**
- Chrome plated **CR**
- Uncoated **RH**

Tumbled

Insert / Retaining screw

Stainless steel AISI 303

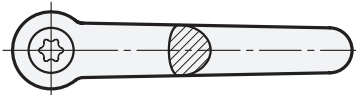
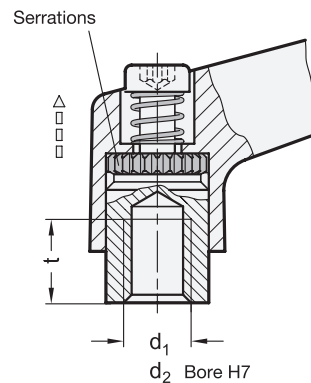
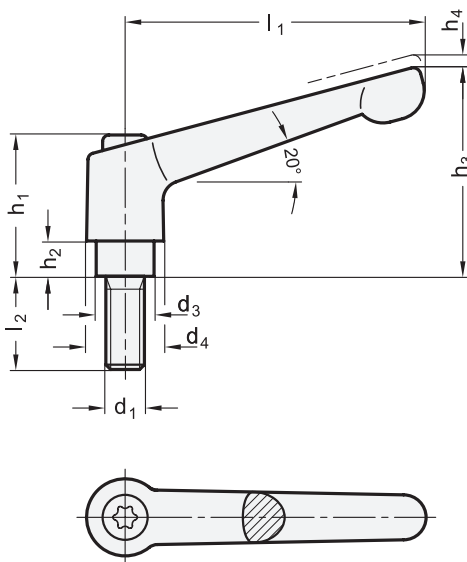
INFORMATION

Adjustable hand levers GN 300.1 are ideal whenever parts have to be clamped in a confined space or in a particular lever position. The centre insert is connected to the lever via serrations which can easily be disengaged.

Pulling the lever, disengages the serrations and allowing it to be swivelled to the ideal clamping position. On releasing the lever the serrations automatically re-engage.

TECHNICAL INFORMATION

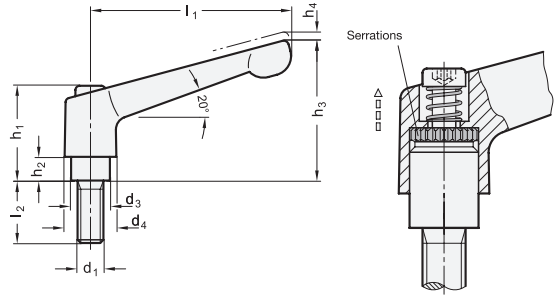
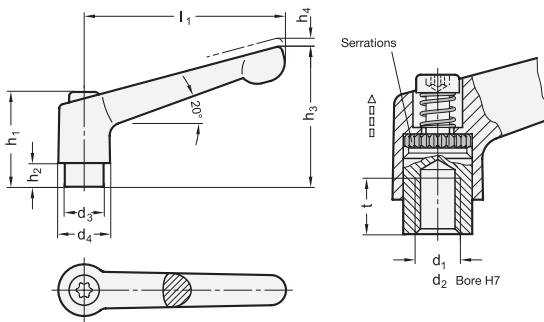
- ISO-Fundamental Tolerances (see page A21)
- Strength Values of Screws (see page A20)
- Stainless Steel Characteristics (see page A26)



* Complete with

SW SZ OS RS SR CR
 RAL9005 RAL9005 RAL2004 RAL3000 RAL9006 Chrome-plated

RH
Uncoated



GN 300.1-With internal thread / reamed hole

| Description | l1 | d1 Thread | d2 H7 Bore | d3 | d4 | h1 | h2 | h3 | H4 Stroke | t min. | |
|--------------------|-----|--------------|---------------|------|------|------|-----|----|--------------|-----------|-----|
| GN 300.1-22-M3-* | 22 | M 3 | - | 8 | 10.5 | 18.5 | 2 | 23 | 3 | 5 | 13 |
| GN 300.1-22-M4-* | 22 | M 4 | - | 8 | 10.5 | 18.5 | 2 | 23 | 3 | 5 | 13 |
| GN 300.1-22-M5-* | 22 | M 5 | - | 8 | 10.5 | 18.5 | 2 | 23 | 3 | 5 | 12 |
| GN 300.1-30-M3-* | 30 | M 3 | - | 10 | 13 | 24.5 | 4 | 31 | 3.5 | 7 | 26 |
| GN 300.1-30-M4-* | 30 | M 4 | - | 10 | 13 | 24.5 | 4 | 31 | 3.5 | 8 | 26 |
| GN 300.1-30-M5-* | 30 | M 5 | - | 10 | 13 | 24.5 | 4 | 31 | 3.5 | 8 | 24 |
| GN 300.1-30-M6-* | 30 | M 6 | - | 10 | 13 | 24.5 | 4 | 31 | 3.5 | 8 | 26 |
| GN 300.1-30-B5-* | 30 | - | B 5 | 10 | 13 | 24.5 | 4 | 31 | 3.5 | 8 | 26 |
| GN 300.1-30-B6-* | 30 | - | B 6 | 10 | 13 | 24.5 | 4 | 31 | 3.5 | 8 | 24 |
| GN 300.1-45-M4-* | 45 | M 4 | - | 10 | 13 | 24.5 | 4 | 34 | 3.5 | 8 | 35 |
| GN 300.1-45-M5-* | 45 | M 5 | - | 10 | 13 | 24.5 | 4 | 34 | 3.5 | 8 | 33 |
| GN 300.1-45-M6-* | 45 | M 6 | - | 10 | 13 | 24.5 | 4 | 34 | 3.5 | 8 | 34 |
| GN 300.1-45-B5-* | 45 | - | B 5 | 10 | 13 | 24.5 | 4 | 34 | 3.5 | 8 | 34 |
| GN 300.1-45-B6-* | 45 | - | B 6 | 10 | 13 | 24.5 | 4 | 34 | 3.5 | 8 | 33 |
| GN 300.1-63-M6-* | 63 | M 6 | - | 13.5 | 17.5 | 31 | 6.5 | 45 | 4 | 11 | 76 |
| GN 300.1-63-M8-* | 63 | M 8 | - | 13.5 | 17.5 | 31 | 6.5 | 45 | 4 | 11 | 61 |
| GN 300.1-63-B8-* | 63 | - | B 8 | 13.5 | 17.5 | 31 | 6.5 | 45 | 4 | 11 | 73 |
| GN 300.1-78-M8-* | 78 | M 8 | - | 16 | 21 | 36 | 8 | 54 | 4 | 14 | 122 |
| GN 300.1-78-M10-* | 78 | M 10 | - | 16 | 21 | 36 | 8 | 54 | 4 | 14 | 122 |
| GN 300.1-78-M12-* | 78 | M 12 | - | 16 | 21 | 36 | 8 | 54 | 4 | 14 | 122 |
| GN 300.1-78-B8-* | 78 | - | B 8 | 16 | 21 | 36 | 8 | 54 | 4 | 14 | 120 |
| GN 300.1-78-B10-* | 78 | - | B 10 | 16 | 21 | 36 | 8 | 54 | 4 | 14 | 122 |
| GN 300.1-92-M10-* | 92 | M 10 | - | 19 | 24 | 43 | 11 | 64 | 4 | 17 | 178 |
| GN 300.1-92-M12-* | 92 | M 12 | - | 19 | 24 | 43 | 11 | 64 | 4 | 17 | 172 |
| GN 300.1-92-B12-* | 92 | - | B 12 | 19 | 24 | 43 | 11 | 64 | 4 | 17 | 174 |
| GN 300.1-108-M12-* | 108 | M 12 | - | 23 | 30 | 50.5 | 12 | 75 | 5 | 22 | 299 |
| GN 300.1-108-M16-* | 108 | M 16 | - | 23 | 30 | 50.5 | 12 | 75 | 5 | 22 | 282 |
| GN 300.1-108-B12-* | 108 | - | B 12 | 23 | 30 | 50.5 | 12 | 75 | 5 | 22 | 299 |
| GN 300.1-108-B16-* | 108 | - | B 16 | 23 | 30 | 50.5 | 12 | 75 | 5 | 22 | 297 |

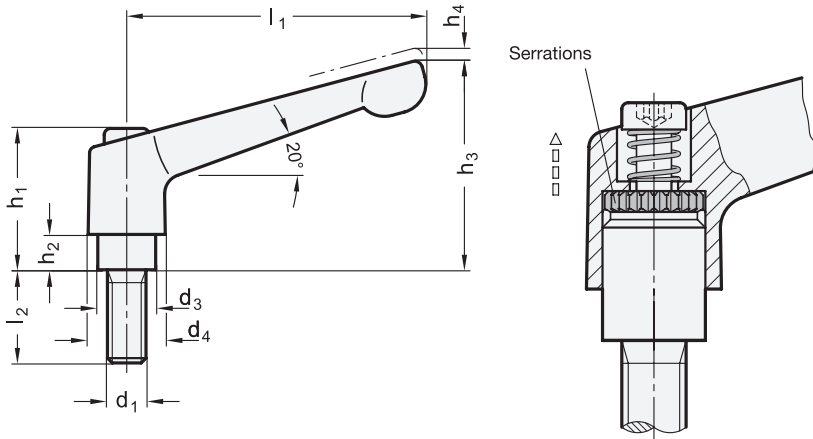
GN 300.1-With external thread

| Description | l1 | d1 | l2 | d3 | d4 | h1 | h2 | h3 | h4 Stroke | |
|---------------------|----|-----|----|----|------|------|----|----|--------------|----|
| GN 300.1-22-M3-6-* | 22 | M 3 | 6 | 8 | 10.5 | 18.5 | 2 | 23 | 3 | 14 |
| GN 300.1-22-M3-8-* | 22 | M 3 | 8 | 8 | 10.5 | 18.5 | 2 | 23 | 3 | 12 |
| GN 300.1-22-M3-10-* | 22 | M 3 | 10 | 8 | 10.5 | 18.5 | 2 | 23 | 3 | 14 |
| GN 300.1-22-M3-12-* | 22 | M 3 | 12 | 8 | 10.5 | 18.5 | 2 | 23 | 3 | 14 |
| GN 300.1-22-M3-16-* | 22 | M 3 | 16 | 8 | 10.5 | 18.5 | 2 | 23 | 3 | 14 |
| GN 300.1-22-M4-12-* | 22 | M 4 | 12 | 8 | 10.5 | 18.5 | 2 | 23 | 3 | 14 |
| GN 300.1-22-M4-16-* | 22 | M 4 | 16 | 8 | 10.5 | 18.5 | 2 | 23 | 3 | 14 |
| GN 300.1-22-M4-20-* | 22 | M 4 | 20 | 8 | 10.5 | 18.5 | 2 | 23 | 3 | 15 |
| GN 300.1-22-M4-25-* | 22 | M 4 | 25 | 8 | 10.5 | 18.5 | 2 | 23 | 3 | 15 |
| GN 300.1-22-M4-32-* | 22 | M 4 | 32 | 8 | 10.5 | 18.5 | 2 | 23 | 3 | 16 |
| GN 300.1-22-M5-12-* | 22 | M 5 | 12 | 8 | 10.5 | 18.5 | 2 | 23 | 3 | 14 |
| GN 300.1-22-M5-16-* | 22 | M 5 | 16 | 8 | 10.5 | 18.5 | 2 | 23 | 3 | 15 |
| GN 300.1-22-M5-20-* | 22 | M 5 | 20 | 8 | 10.5 | 18.5 | 2 | 23 | 3 | 16 |
| GN 300.1-22-M5-25-* | 22 | M 5 | 25 | 8 | 10.5 | 18.5 | 2 | 23 | 3 | 16 |
| GN 300.1-22-M5-32-* | 22 | M 5 | 32 | 8 | 10.5 | 18.5 | 2 | 23 | 3 | 17 |
| GN 300.1-30-M3-6-* | 30 | M 3 | 6 | 10 | 13 | 24.5 | 4 | 31 | 3.5 | 26 |
| GN 300.1-30-M3-8-* | 30 | M 3 | 8 | 10 | 13 | 24.5 | 4 | 31 | 3.5 | 26 |
| GN 300.1-30-M3-10-* | 30 | M 3 | 10 | 10 | 13 | 24.5 | 4 | 31 | 3.5 | 26 |
| GN 300.1-30-M3-12-* | 30 | M 3 | 12 | 10 | 13 | 24.5 | 4 | 31 | 3.5 | 27 |
| GN 300.1-30-M3-16-* | 30 | M 3 | 16 | 10 | 13 | 24.5 | 4 | 31 | 3.5 | 27 |
| GN 300.1-30-M4-12-* | 30 | M 4 | 12 | 10 | 13 | 24.5 | 4 | 31 | 3.5 | 27 |
| GN 300.1-30-M4-16-* | 30 | M 4 | 16 | 10 | 13 | 24.5 | 4 | 31 | 3.5 | 27 |
| GN 300.1-30-M4-20-* | 30 | M 4 | 20 | 10 | 13 | 24.5 | 4 | 31 | 3.5 | 28 |
| GN 300.1-30-M4-25-* | 30 | M 4 | 25 | 10 | 13 | 24.5 | 4 | 31 | 3.5 | 28 |
| GN 300.1-30-M4-32-* | 30 | M 4 | 32 | 10 | 13 | 24.5 | 4 | 31 | 3.5 | 29 |
| GN 300.1-30-M5-12-* | 30 | M 5 | 12 | 10 | 13 | 24.5 | 4 | 31 | 3.5 | 28 |
| GN 300.1-30-M5-16-* | 30 | M 5 | 16 | 10 | 13 | 24.5 | 4 | 31 | 3.5 | 28 |
| GN 300.1-30-M5-20-* | 30 | M 5 | 20 | 10 | 13 | 24.5 | 4 | 31 | 3.5 | 28 |
| GN 300.1-30-M5-25-* | 30 | M 5 | 25 | 10 | 13 | 24.5 | 4 | 31 | 3.5 | 30 |
| GN 300.1-30-M5-32-* | 30 | M 5 | 32 | 10 | 13 | 24.5 | 4 | 31 | 3.5 | 30 |
| GN 300.1-30-M6-12-* | 30 | M 6 | 12 | 10 | 13 | 24.5 | 4 | 31 | 3.5 | 28 |
| GN 300.1-30-M6-16-* | 30 | M 6 | 16 | 10 | 13 | 24.5 | 4 | 31 | 3.5 | 30 |
| GN 300.1-30-M6-20-* | 30 | M 6 | 20 | 10 | 13 | 24.5 | 4 | 31 | 3.5 | 30 |
| GN 300.1-30-M6-25-* | 30 | M 6 | 25 | 10 | 13 | 24.5 | 4 | 31 | 3.5 | 30 |
| GN 300.1-30-M6-32-* | 30 | M 6 | 32 | 10 | 13 | 24.5 | 4 | 31 | 3.5 | 32 |
| GN 300.1-30-M6-40-* | 30 | M 6 | 40 | 10 | 13 | 24.5 | 4 | 31 | 3.5 | 34 |
| GN 300.1-30-M6-50-* | 30 | M 6 | 50 | 10 | 13 | 24.5 | 4 | 31 | 3.5 | 34 |

Weight SW

Weight SW





* Complete with

SW RAL9005
 SZ RAL9005
 OS RAL2004
 RS RAL3000
 SR RAL9006
 CR Chrome-plated
 RH Uncoated

GN 300.1-With external thread

| Description | l1 | d1 | l2 | d3 | d4 | h1 | h2 | h3 | h4 Stroke | ⚖ |
|---------------------|----|-----|----|------|------|------|-----|----|-----------|-----|
| GN 300.1-45-M4-12-* | 45 | M 4 | 12 | 10 | 13 | 24.5 | 4 | 34 | 3.5 | 35 |
| GN 300.1-45-M4-16-* | 45 | M 4 | 16 | 10 | 13 | 24.5 | 4 | 34 | 3.5 | 35 |
| GN 300.1-45-M4-20-* | 45 | M 4 | 20 | 10 | 13 | 24.5 | 4 | 34 | 3.5 | 36 |
| GN 300.1-45-M4-25-* | 45 | M 4 | 25 | 10 | 13 | 24.5 | 4 | 34 | 3.5 | 36 |
| GN 300.1-45-M4-32-* | 45 | M 4 | 32 | 10 | 13 | 24.5 | 4 | 34 | 3.5 | 38 |
| GN 300.1-45-M5-12-* | 45 | M 5 | 12 | 10 | 13 | 24.5 | 4 | 34 | 3.5 | 36 |
| GN 300.1-45-M5-16-* | 45 | M 5 | 16 | 10 | 13 | 24.5 | 4 | 34 | 3.5 | 37 |
| GN 300.1-45-M5-20-* | 45 | M 5 | 20 | 10 | 13 | 24.5 | 4 | 34 | 3.5 | 37 |
| GN 300.1-45-M5-25-* | 45 | M 5 | 25 | 10 | 13 | 24.5 | 4 | 34 | 3.5 | 38 |
| GN 300.1-45-M5-32-* | 45 | M 5 | 32 | 10 | 13 | 24.5 | 4 | 34 | 3.5 | 39 |
| GN 300.1-45-M5-40-* | 45 | M 5 | 40 | 10 | 13 | 24.5 | 4 | 34 | 3.5 | 40 |
| GN 300.1-45-M5-50-* | 45 | M 5 | 50 | 10 | 13 | 24.5 | 4 | 34 | 3.5 | 41 |
| GN 300.1-45-M6-12-* | 45 | M 6 | 12 | 10 | 13 | 24.5 | 4 | 34 | 3.5 | 37 |
| GN 300.1-45-M6-16-* | 45 | M 6 | 16 | 10 | 13 | 24.5 | 4 | 34 | 3.5 | 38 |
| GN 300.1-45-M6-20-* | 45 | M 6 | 20 | 10 | 13 | 24.5 | 4 | 34 | 3.5 | 38 |
| GN 300.1-45-M6-25-* | 45 | M 6 | 25 | 10 | 13 | 24.5 | 4 | 34 | 3.5 | 39 |
| GN 300.1-45-M6-32-* | 45 | M 6 | 32 | 10 | 13 | 24.5 | 4 | 34 | 3.5 | 41 |
| GN 300.1-45-M6-40-* | 45 | M 6 | 40 | 10 | 13 | 24.5 | 4 | 34 | 3.5 | 42 |
| GN 300.1-45-M6-50-* | 45 | M 6 | 50 | 10 | 13 | 24.5 | 4 | 34 | 3.5 | 43 |
| GN 300.1-63-M6-16-* | 63 | M 6 | 16 | 13.5 | 17.5 | 31 | 6.5 | 45 | 4 | 80 |
| GN 300.1-63-M6-20-* | 63 | M 6 | 20 | 13.5 | 17.5 | 31 | 6.5 | 45 | 4 | 81 |
| GN 300.1-63-M6-25-* | 63 | M 6 | 25 | 13.5 | 17.5 | 31 | 6.5 | 45 | 4 | 82 |
| GN 300.1-63-M6-32-* | 63 | M 6 | 32 | 13.5 | 17.5 | 31 | 6.5 | 45 | 4 | 84 |
| GN 300.1-63-M6-40-* | 63 | M 6 | 40 | 13.5 | 17.5 | 31 | 6.5 | 45 | 4 | 85 |
| GN 300.1-63-M6-50-* | 63 | M 6 | 50 | 13.5 | 17.5 | 31 | 6.5 | 45 | 4 | 86 |
| GN 300.1-63-M6-63-* | 63 | M 6 | 63 | 13.5 | 17.5 | 31 | 6.5 | 45 | 4 | 88 |
| GN 300.1-63-M8-16-* | 63 | M 8 | 16 | 13.5 | 17.5 | 31 | 6.5 | 45 | 4 | 83 |
| GN 300.1-63-M8-20-* | 63 | M 8 | 20 | 13.5 | 17.5 | 31 | 6.5 | 45 | 4 | 84 |
| GN 300.1-63-M8-25-* | 63 | M 8 | 25 | 13.5 | 17.5 | 31 | 6.5 | 45 | 4 | 86 |
| GN 300.1-63-M8-32-* | 63 | M 8 | 32 | 13.5 | 17.5 | 31 | 6.5 | 45 | 4 | 87 |
| GN 300.1-63-M8-40-* | 63 | M 8 | 40 | 13.5 | 17.5 | 31 | 6.5 | 45 | 4 | 90 |
| GN 300.1-63-M8-50-* | 63 | M 8 | 50 | 13.5 | 17.5 | 31 | 6.5 | 45 | 4 | 94 |
| GN 300.1-63-M8-63-* | 63 | M 8 | 63 | 13.5 | 17.5 | 31 | 6.5 | 45 | 4 | 98 |
| GN 300.1-78-M8-20-* | 78 | M 8 | 20 | 16 | 21 | 36 | 8 | 54 | 4 | 133 |
| GN 300.1-78-M8-25-* | 78 | M 8 | 25 | 16 | 21 | 36 | 8 | 54 | 4 | 135 |
| GN 300.1-78-M8-32-* | 78 | M 8 | 32 | 16 | 21 | 36 | 8 | 54 | 4 | 137 |
| GN 300.1-78-M8-40-* | 78 | M 8 | 40 | 16 | 21 | 36 | 8 | 54 | 4 | 140 |
| GN 300.1-78-M8-50-* | 78 | M 8 | 50 | 16 | 21 | 36 | 8 | 54 | 4 | 143 |
| GN 300.1-78-M8-63-* | 78 | M 8 | 63 | 16 | 21 | 36 | 8 | 54 | 4 | 146 |
| GN 300.1-78-M8-80-* | 78 | M 8 | 80 | 16 | 21 | 36 | 8 | 54 | 4 | 151 |

GN 300.1-With external thread

| Description | l1 | d1 | l2 | d3 | d4 | h1 | h2 | h3 | h4 Stroke | ⚖ |
|-----------------------|-----|------|----|----|----|------|----|----|-----------|-----|
| GN 300.1-78-M10-20-* | 78 | M 10 | 20 | 16 | 21 | 36 | 8 | 54 | 4 | 137 |
| GN 300.1-78-M10-25-* | 78 | M 10 | 25 | 16 | 21 | 36 | 8 | 54 | 4 | 139 |
| GN 300.1-78-M10-32-* | 78 | M 10 | 32 | 16 | 21 | 36 | 8 | 54 | 4 | 142 |
| GN 300.1-78-M10-40-* | 78 | M 10 | 40 | 16 | 21 | 36 | 8 | 54 | 4 | 147 |
| GN 300.1-78-M10-50-* | 78 | M 10 | 50 | 16 | 21 | 36 | 8 | 54 | 4 | 152 |
| GN 300.1-78-M10-63-* | 78 | M 10 | 63 | 16 | 21 | 36 | 8 | 54 | 4 | 159 |
| GN 300.1-78-M10-80-* | 78 | M 10 | 80 | 16 | 21 | 36 | 8 | 54 | 4 | 166 |
| GN 300.1-78-M12-20-* | 78 | M 12 | 20 | 16 | 21 | 36 | 8 | 54 | 4 | 141 |
| GN 300.1-78-M12-25-* | 78 | M 12 | 25 | 16 | 21 | 36 | 8 | 54 | 4 | 145 |
| GN 300.1-78-M12-32-* | 78 | M 12 | 32 | 16 | 21 | 36 | 8 | 54 | 4 | 150 |
| GN 300.1-78-M12-40-* | 78 | M 12 | 40 | 16 | 21 | 36 | 8 | 54 | 4 | 156 |
| GN 300.1-78-M12-50-* | 78 | M 12 | 50 | 16 | 21 | 36 | 8 | 54 | 4 | 163 |
| GN 300.1-78-M12-63-* | 78 | M 12 | 63 | 16 | 21 | 36 | 8 | 54 | 4 | 172 |
| GN 300.1-78-M12-80-* | 78 | M 12 | 80 | 16 | 21 | 36 | 8 | 54 | 4 | 184 |
| GN 300.1-92-M10-20-* | 92 | M 10 | 20 | 19 | 24 | 43 | 11 | 64 | 4 | 196 |
| GN 300.1-92-M10-25-* | 92 | M 10 | 25 | 19 | 24 | 43 | 11 | 64 | 4 | 199 |
| GN 300.1-92-M10-32-* | 92 | M 10 | 32 | 19 | 24 | 43 | 11 | 64 | 4 | 203 |
| GN 300.1-92-M10-40-* | 92 | M 10 | 40 | 19 | 24 | 43 | 11 | 64 | 4 | 207 |
| GN 300.1-92-M10-50-* | 92 | M 10 | 50 | 19 | 24 | 43 | 11 | 64 | 4 | 213 |
| GN 300.1-92-M10-63-* | 92 | M 10 | 63 | 19 | 24 | 43 | 11 | 64 | 4 | 218 |
| GN 300.1-92-M10-80-* | 92 | M 10 | 80 | 19 | 24 | 43 | 11 | 64 | 4 | 229 |
| GN 300.1-92-M12-20-* | 92 | M 12 | 20 | 19 | 24 | 43 | 11 | 64 | 4 | 201 |
| GN 300.1-92-M12-25-* | 92 | M 12 | 25 | 19 | 24 | 43 | 11 | 64 | 4 | 206 |
| GN 300.1-92-M12-32-* | 92 | M 12 | 32 | 19 | 24 | 43 | 11 | 64 | 4 | 211 |
| GN 300.1-92-M12-40-* | 92 | M 12 | 40 | 19 | 24 | 43 | 11 | 64 | 4 | 216 |
| GN 300.1-92-M12-50-* | 92 | M 12 | 50 | 19 | 24 | 43 | 11 | 64 | 4 | 222 |
| GN 300.1-92-M12-63-* | 92 | M 12 | 63 | 19 | 24 | 43 | 11 | 64 | 4 | 233 |
| GN 300.1-92-M12-80-* | 92 | M 12 | 80 | 19 | 24 | 43 | 11 | 64 | 4 | 244 |
| GN 300.1-108-M12-32-* | 108 | M 12 | 32 | 23 | 30 | 50.5 | 12 | 75 | 5 | 343 |
| GN 300.1-108-M12-40-* | 108 | M 12 | 40 | 23 | 30 | 50.5 | 12 | 75 | 5 | 349 |
| GN 300.1-108-M12-50-* | 108 | M 12 | 50 | 23 | 30 | 50.5 | 12 | 75 | 5 | 356 |
| GN 300.1-108-M12-63-* | 108 | M 12 | 63 | 23 | 30 | 50.5 | 12 | 75 | 5 | 364 |
| GN 300.1-108-M12-80-* | 108 | M 12 | 80 | 23 | 30 | 50.5 | 12 | 75 | 5 | 378 |
| GN 300.1-108-M16-32-* | 108 | M 16 | 32 | 23 | 30 | 50.5 | 12 | 75 | 5 | 358 |
| GN 300.1-108-M16-40-* | 108 | M 16 | 40 | 23 | 30 | 50.5 | 12 | 75 | 5 | 369 |
| GN 300.1-108-M16-50-* | 108 | M 16 | 50 | 23 | 30 | 50.5 | 12 | 75 | 5 | 384 |
| GN 300.1-108-M16-63-* | 108 | M 16 | 63 | 23 | 30 | 50.5 | 12 | 75 | 5 | 400 |
| GN 300.1-108-M16-80-* | 108 | M 16 | 80 | 23 | 30 | 50.5 | 12 | 75 | 5 | 422 |

Weight SW

Clamping levers 3